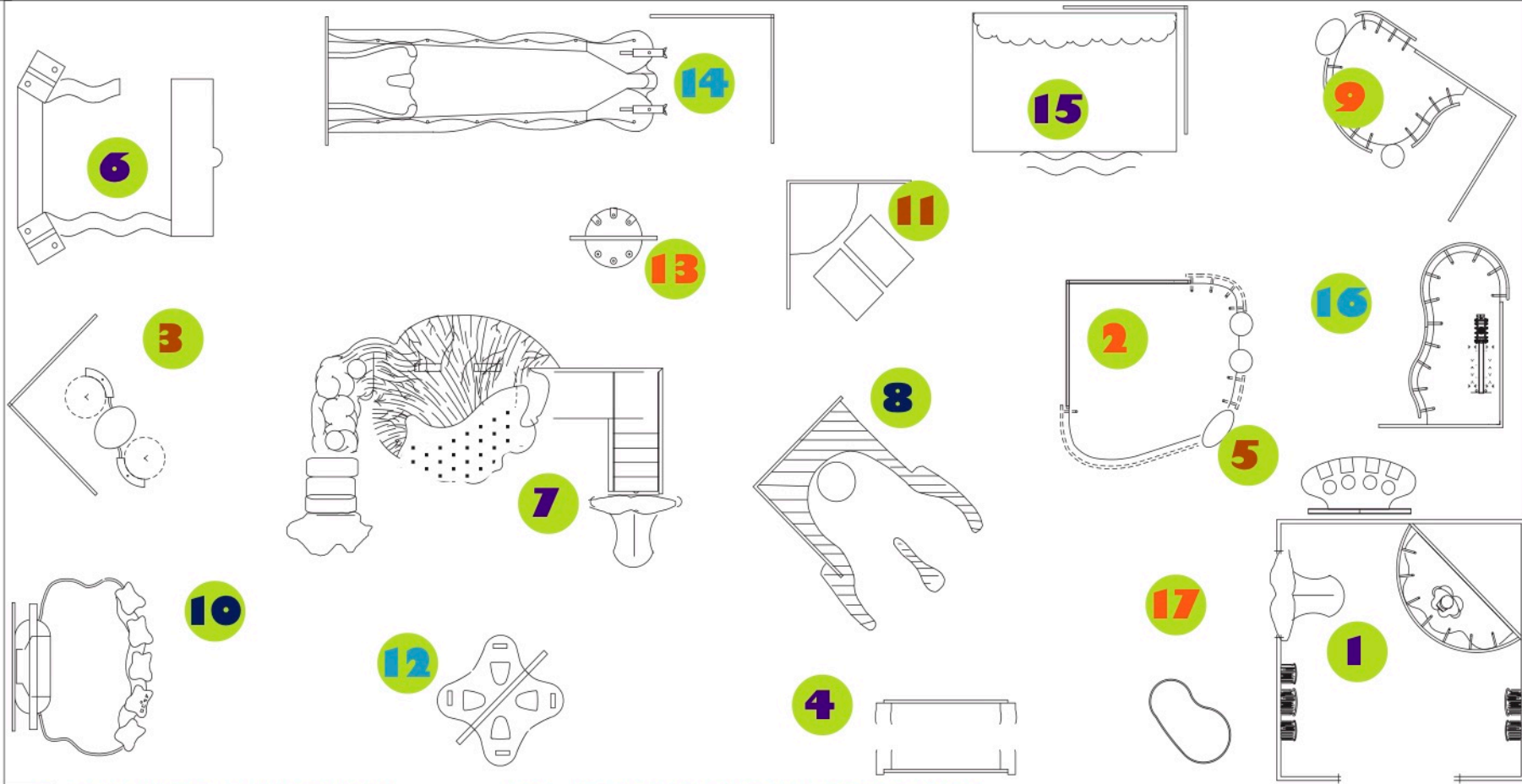




SUGGESTED FLOORPLAN

100'-0"

50'-0"



- 1. GALLERY ENTRANCE**
- 2. NIGEL NOSE-IT-ALL**
- 3. LISTEN TO YOUR BODY**
- 4. LOOK INSIDE**
- 5. YU STINK**
- 6. URINE THE GAME**
- 7. GI SLIDE**
- 8. TOUR DU NOSE**
- 9. BURP MAN**

- 10. LET'S PLAY GROSSOLOGY**
- 11. GAS ATTACK!**
- 12. CLICK ICK**
- 13. TOOT TOOT!**
- 14. UP YOUR NOSE**
- 15. SKIN CLIMBING WALL**
- 16. VOMIT CENTER**
- 17. PATIENTS PLEASE**

GALLERY ENTRANCE

EXHIBIT DESCRIPTION

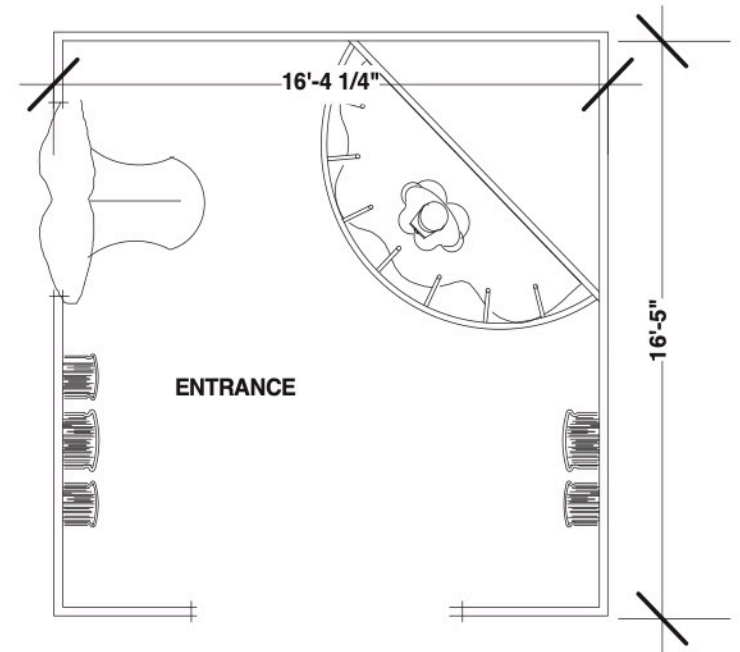
Visitors enter the exhibition gallery and are welcomed by an animatronic “Her Grossness,” who introduces visitors to *GROSSOLOGY!* “Her Grossness” towers over a three-dimensional book replica.

Scenery includes several large, oversized themed books from “Her Grossness’” library, a large cartoon mouth that visitors walk through to enter the exhibition and the exhibition’s credits panel.

Outside the exhibit entrance, a special audio is available to play in which kids ask a series of theme-related questions like: What is snot? Why do we pee? Why do we smell? etc.

INTERACTIVES

- “Her Grossness” is an animatronic character and has four 45-second presentations.



NIGEL NOSE-IT-ALL: Why does my nose have snot?

EXHIBIT DESCRIPTION

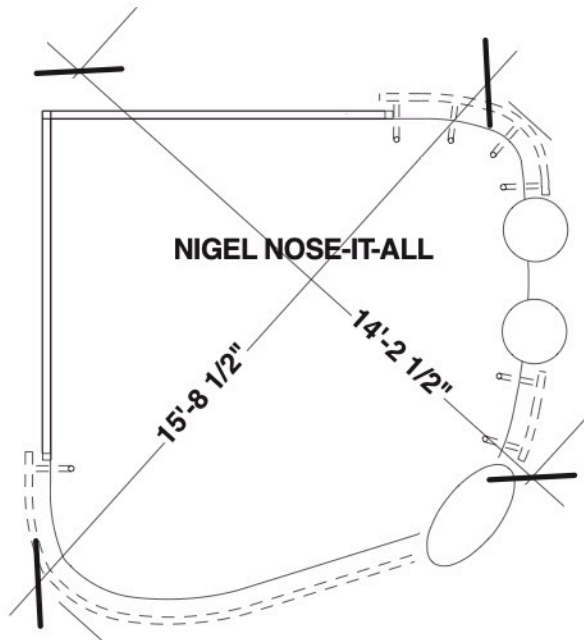
Interested in why we have runny noses, allergies, sneeze, and snot? Ask "Nigel Nose-It-All." Simply select (press button) from five different categories. Nigel has four different presentations in each category. Watch Nigel. But look out! Don't get hit by the snot ball that drops out of his faucet-like nose!

EXHIBIT CONTENT

Scenery includes staging, button kiosk, large two-sided book backdrop with science information, science and health factoids and two microscope stations with three selections.

INTERACTIVES

- Kiosk with five category question buttons
- Two microscope stations
- Spectator viewing: high



LISTEN TO YOUR BODY: Why does my body make noises?

EXHIBIT DESCRIPTION

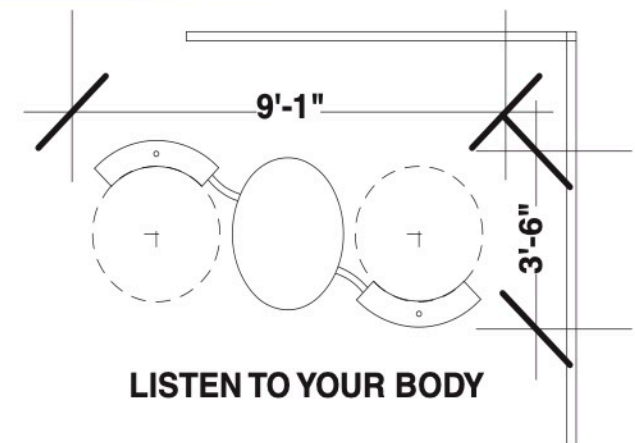
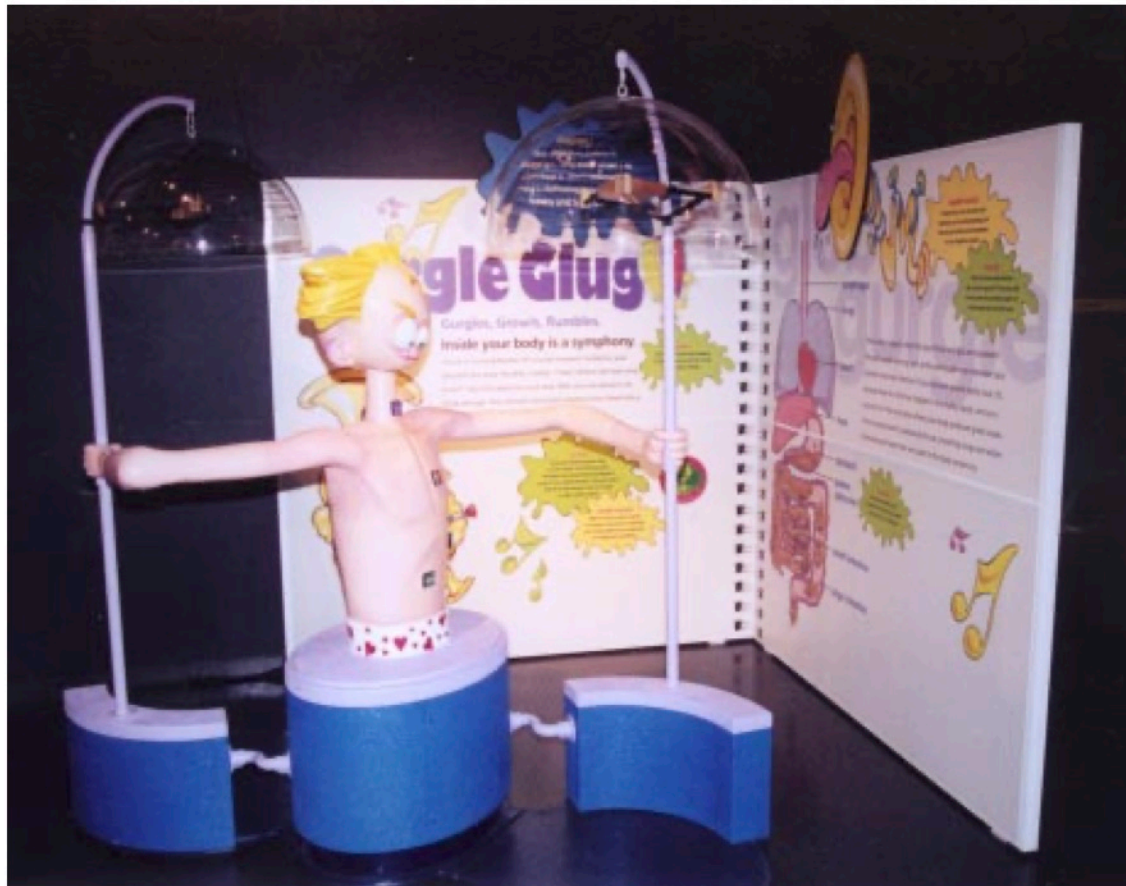
Features a double-sided cartoon character from the book who has four buttons embedded in his body. Visitors stand under one of the two parabolic sound domes and select among four different body sounds — the heart, stomach, throat and lungs.

EXHIBIT CONTENT

Scenery includes large two-sided book backdrop providing science images, supporting information about what causes body noises, and science and health factoids.

INTERACTIVES

- Two stations with four selections each
- Spinner question



LOOK INSIDE: What is my digestive system and how does it work?

EXHIBIT DESCRIPTION

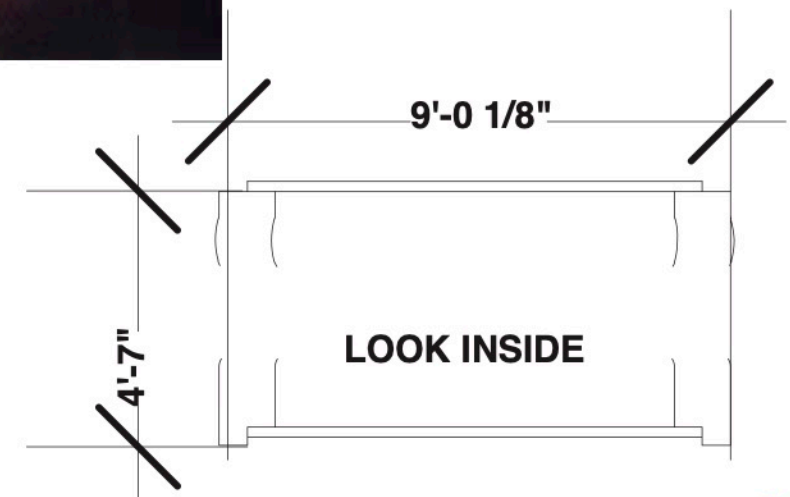
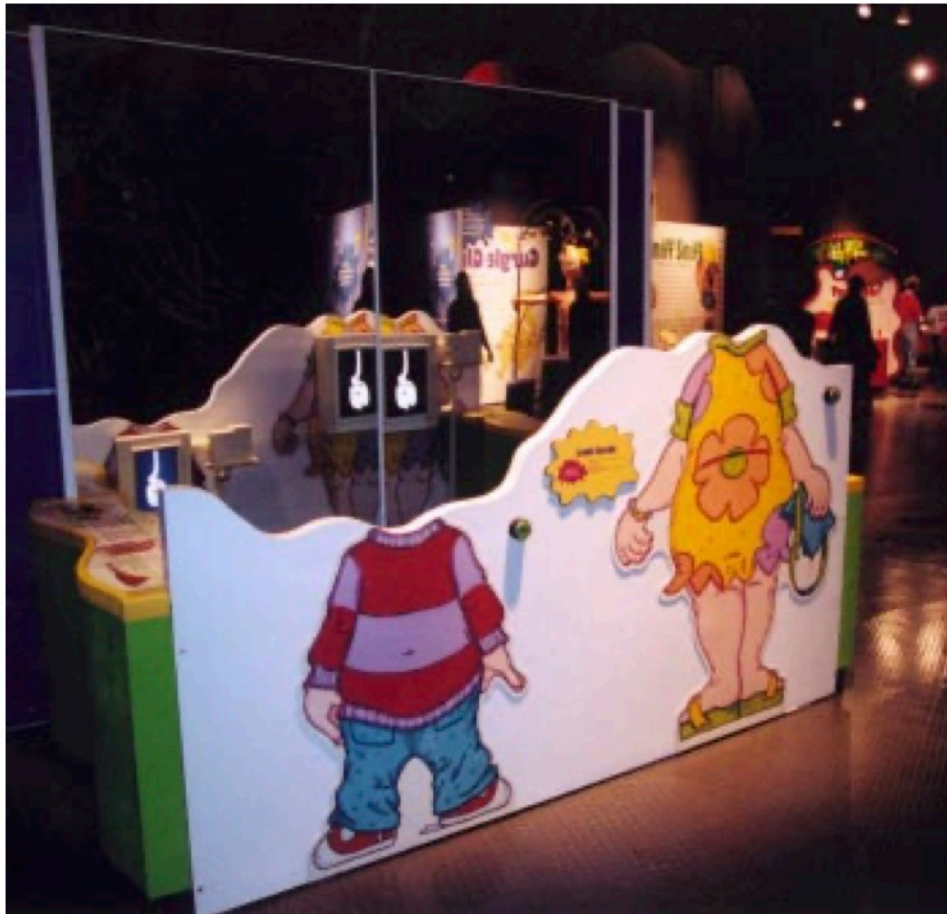
Visitors can see that their head seems positioned on a cartoon body. They press the start button and look into the mirror facing them. They see an X-ray machine playing an animated video describing the digestion of food as it passes through the gastrointestinal system.

EXHIBIT CONTENT

Features two cartoon characters of different heights for visitors to position themselves for viewing the video. Additional science information is on top of the wiggle walls on the sides of the exhibit.

INTERACTIVES

- Two video stations



URINE THE GAME: What do my kidneys do?

EXHIBIT DESCRIPTION

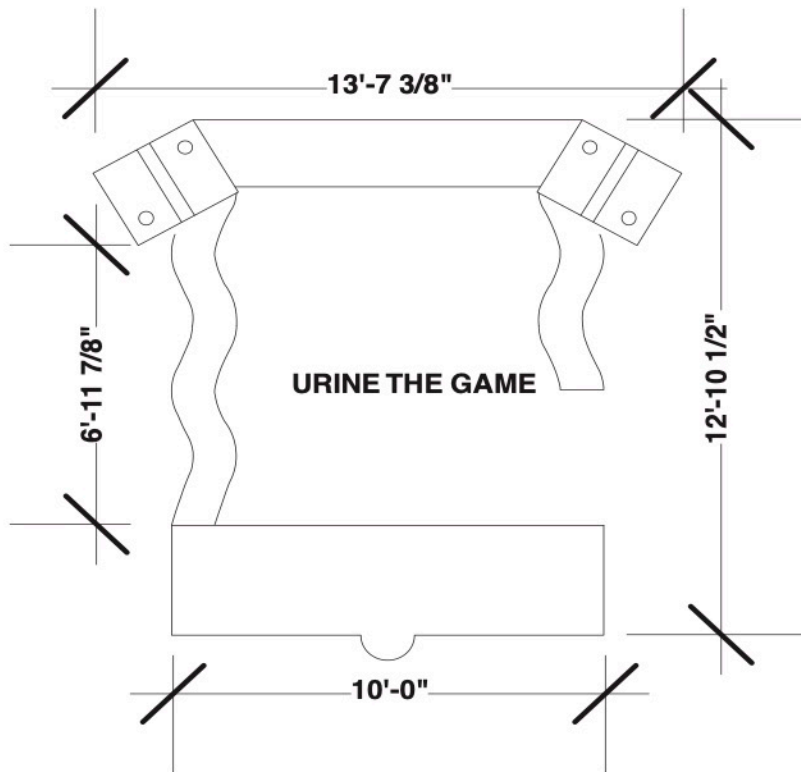
The exhibit simulates how the kidneys remove waste from the blood. The visitor acts as a kidney and using a Virtual Reality glove and blue-screen technology, they view a video where they grab waste elements and remove them from the bloodstream. The more you catch, the more points you register on the scoreboard — a pee meter!

EXHIBIT CONTENT

Includes staging, kidneys with pee meter scoring system, blue-screen equipment and two monitors, large player's monitor and supporting science signage.

INTERACTIVES

- One station – approximately a one-minute activity
- Spectator viewing – high



GI SLIDE: What body parts make up the GI Tract?

EXHIBIT DESCRIPTION

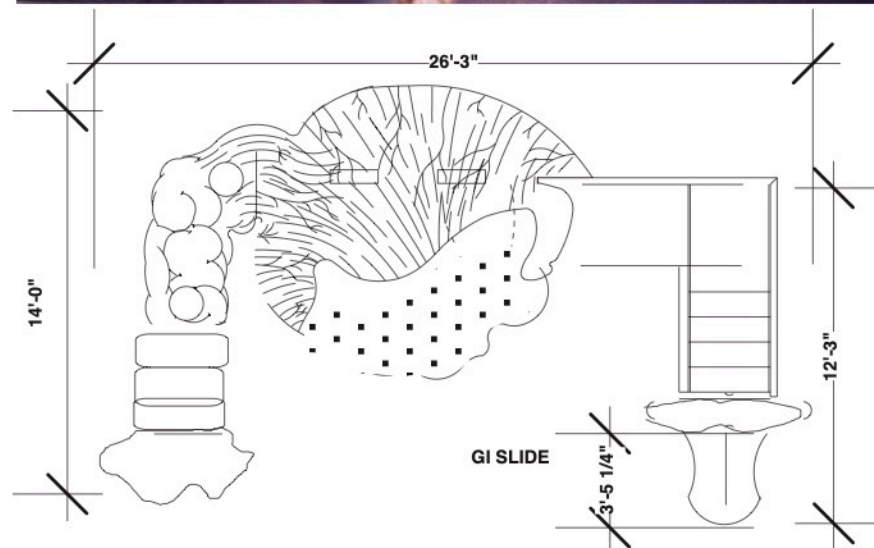
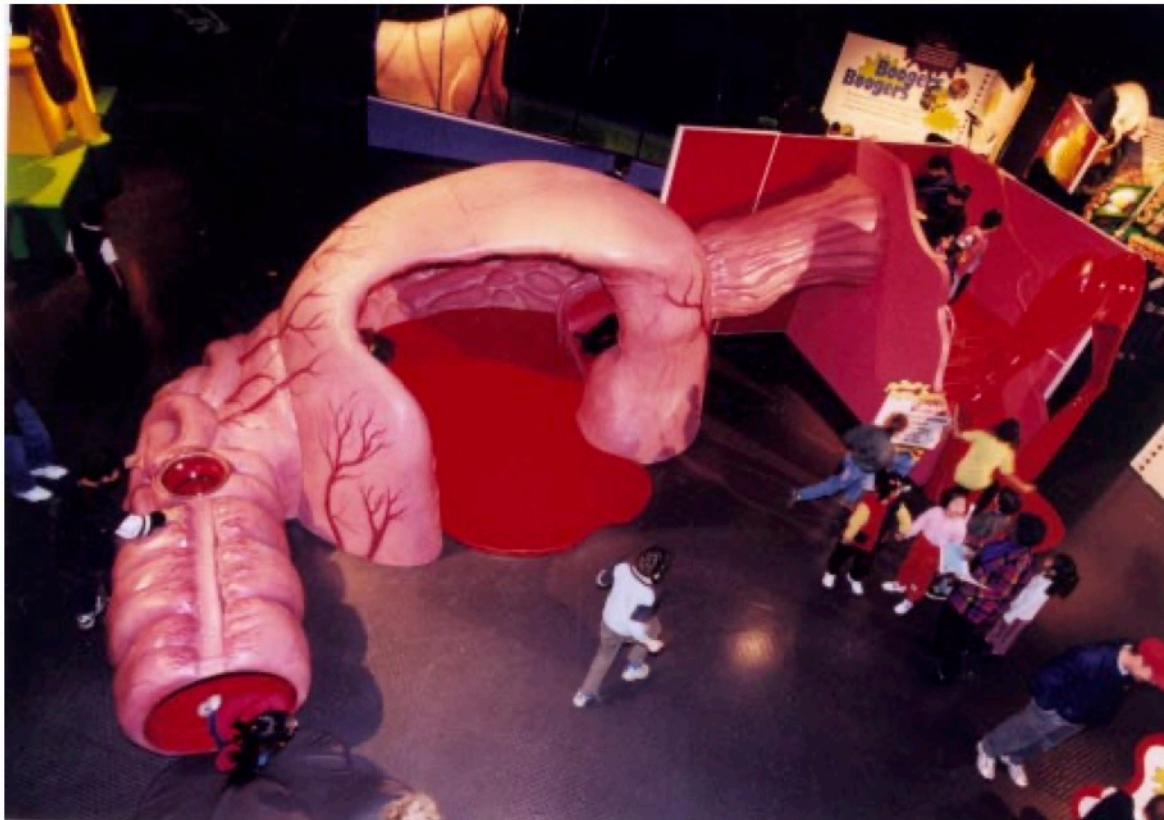
For our younger visitors. Children walk, climb, slide and crawl through a giant 3-D model of the human digestive system. Using the oversized book wall, teachers can use a human-size model to explain the human body system, view an endoscopy video of the GI system, demonstrate how long the small intestine is and much more. Loads of science and health factoids!

EXHIBIT CONTENT

Features a 30+-foot-long GI play area and a hard-working book backdrop with loads of information, human model, science art, spinner question and an endoscopy video of the GI tract.

INTERACTIVES

- Giant GI play area
- Endoscopy video
- Spinner question
- Spectator viewing: high



TOUR DU NOSE: How does my nose function?

EXHIBIT DESCRIPTION

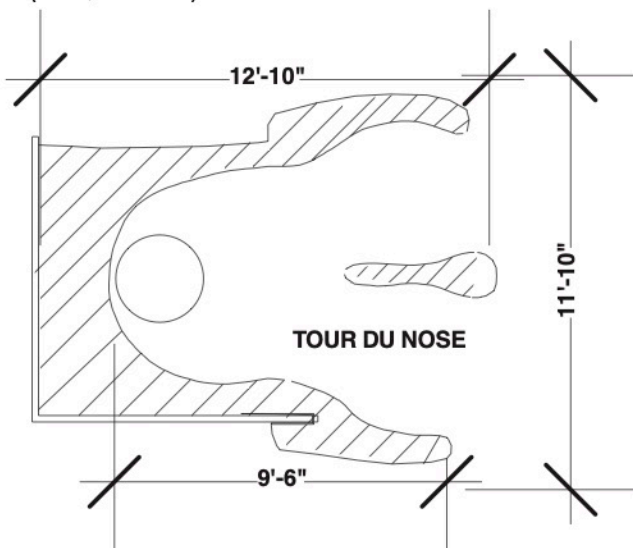
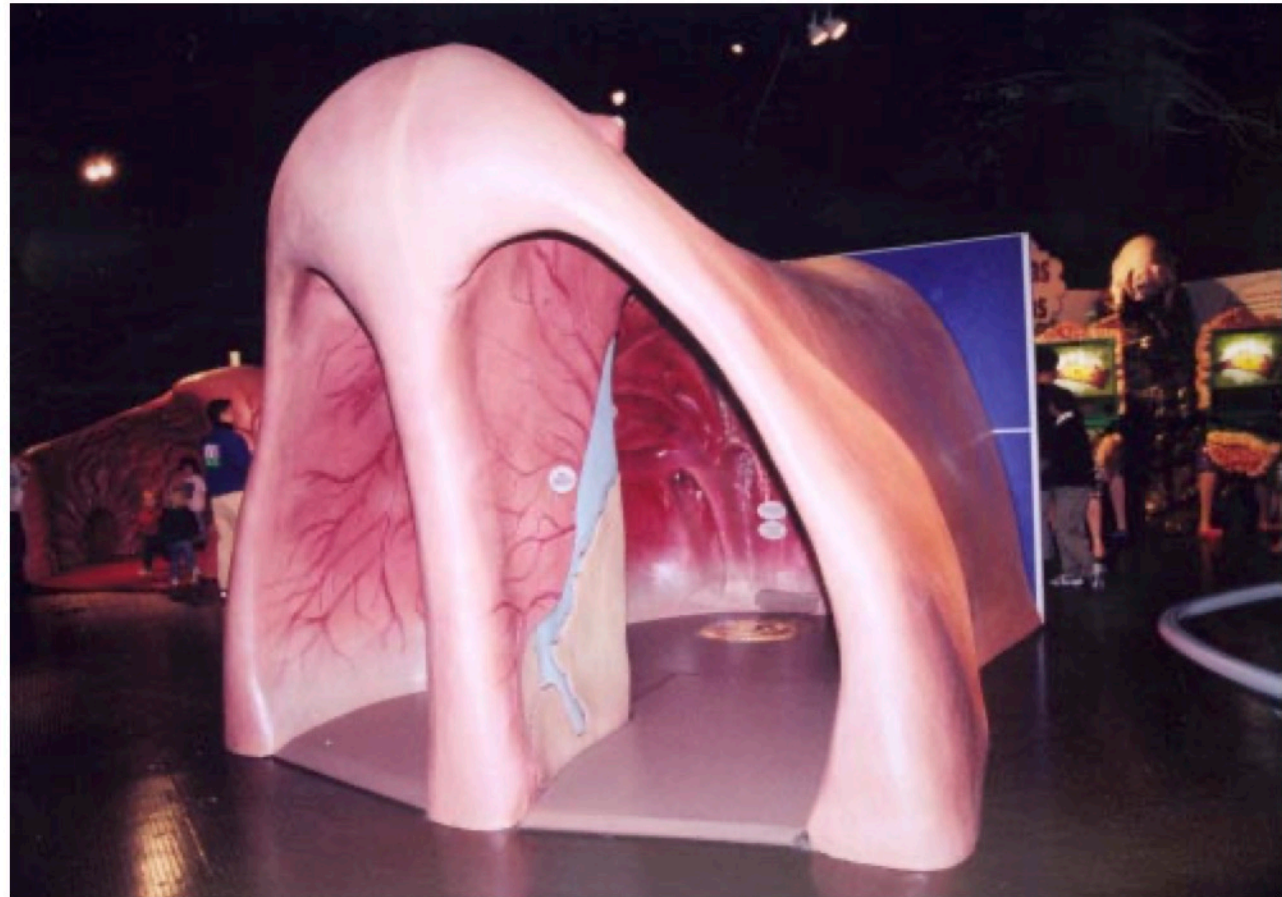
Ever imagine walking into a giant nose? Here's your chance. Learn the features inside your nose and what they look like. As you enter through a nostril you notice many features including: the conchae, mucus wall, smell center, sinuses and much more. At the back of the nose you get a view down the throat via a backlit photo that is built into the floor. Of course, just as you think you've seen it all, the nose wakes up (audio) and lets out a major sneeze and you are blown out of the nose. (Well, almost!)

EXHIBIT CONTENT

A giant 10' H x 14' L nose. Includes large book wall on back and side of nose featuring a medical cutaway of the nose and throat area, a spinner question, a compare-your-nose interactive, loads of science information and factoids.

INTERACTIVES

- Giant nose
- Spinner question
- Compare your nose
- Sneeze effect



BURP MAN: What causes me to burp?

EXHIBIT DESCRIPTION

A larger-than-life cartoon character drinks from a three-foot-tall pop can pumped by visitors. Once the burp meter reaches "gas attack," our animated character lets out a belch! Oops! Pardon me! At a second interactive station, visitors learn about air pressure and how the cardiac sphincter works.

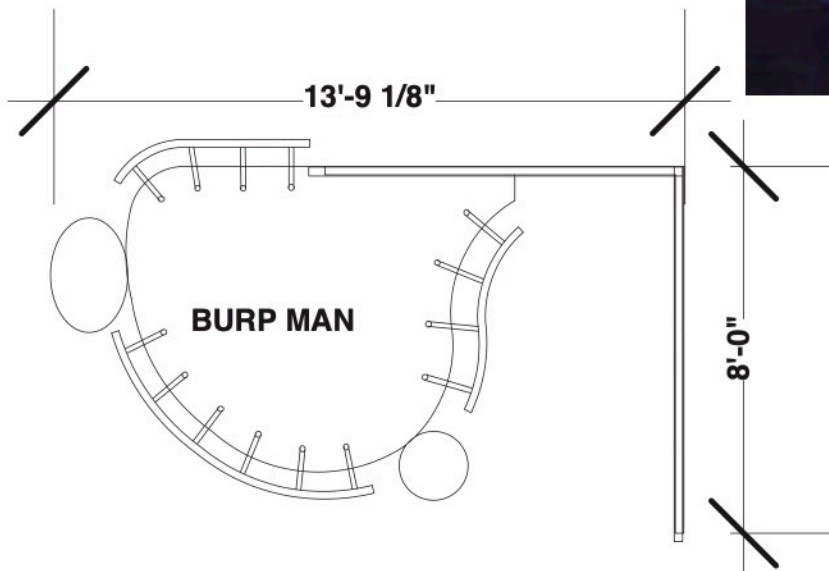
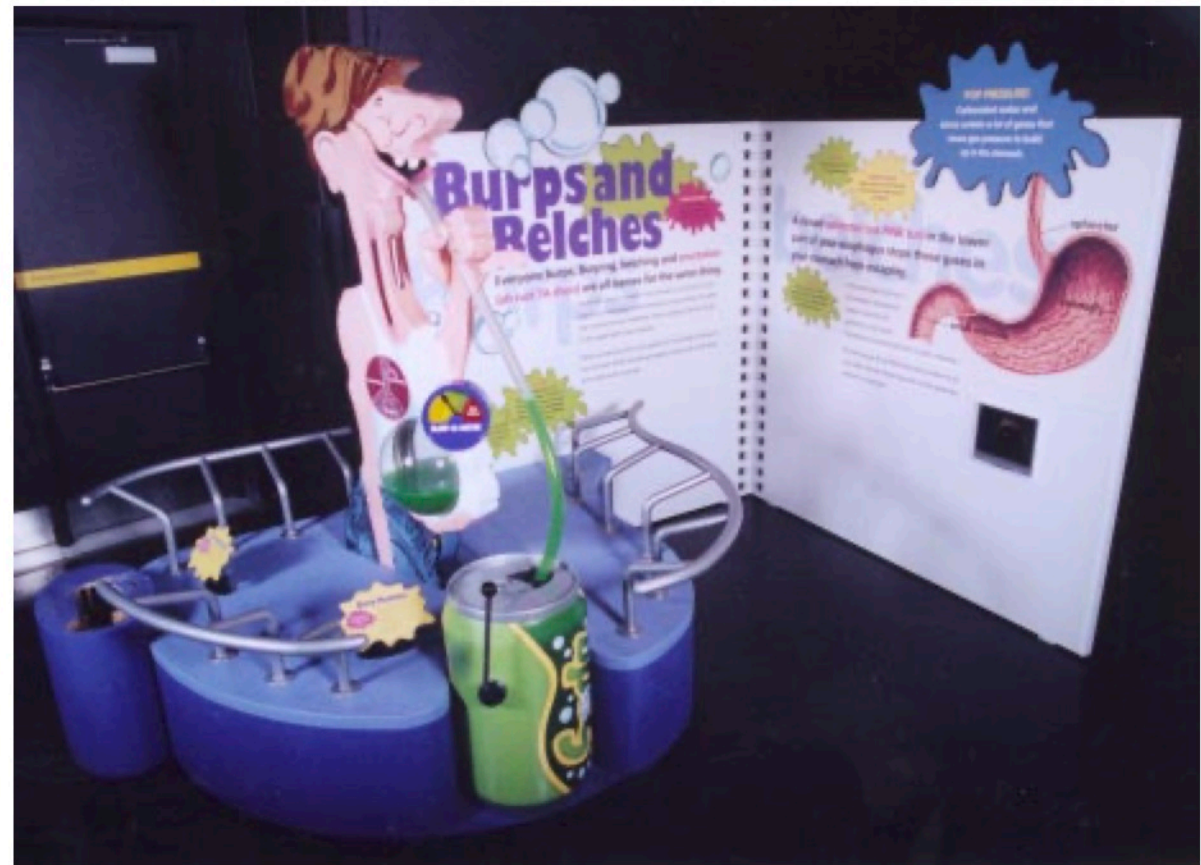
EXHIBIT CONTENT

Features a giant pop can with a pump handle, burp pressure meter, see-through stomach for

viewing gas buildup, and our large animated character. Second interactive station, endoscopy video of upper GI tract, spinner question and loads of science information, medical cutaway of stomach and many factoids are on the book wall.

INTERACTIVES

- Burp machine
- Cardiac sphincter station
- Upper GI endoscopy video
- Spinner question



CLICK ICK: Explore GROSSOLOGY games and labs!

EXHIBIT DESCRIPTION

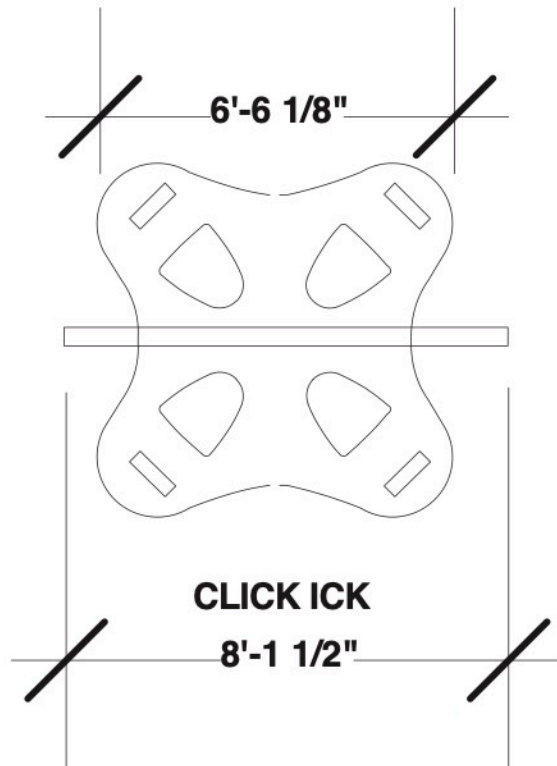
Four computer stations allow visitors to play Segasoft's GROSSOLOGY CD featuring nine different activities: exploratory labs, puzzles, games and more. A book wall separates the four stations. The book wall contains factoids and images on both sides.

EXHIBIT CONTENT

Includes four iMac computer stations divided by a singular, two-sided book wall.

INTERACTIVES

- Four computer stations



TOOT TOOT!: Why do I toot?

EXHIBIT DESCRIPTION

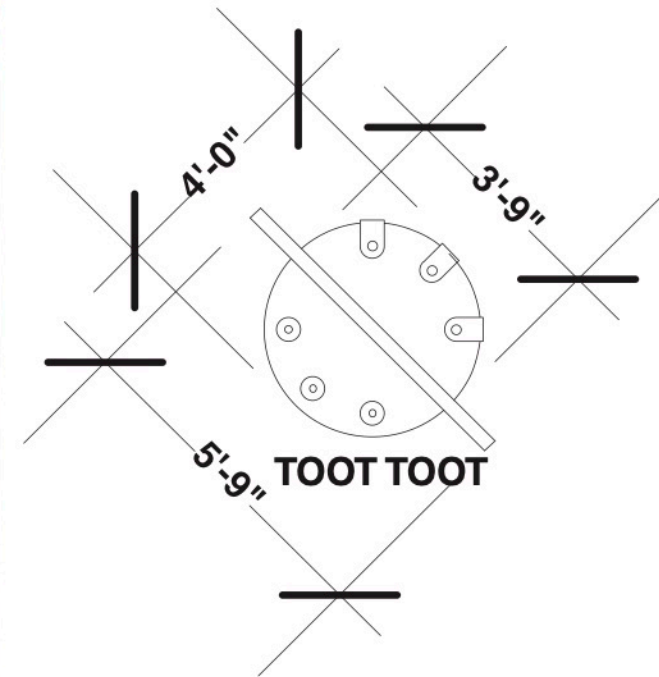
This exhibit is about the physics of gas: how air, vibration and pressure create different sounds. Visitors press a button to start a fan. This sends air through six short lengths of tubing (3 per side). Visitors pinch the ends of the tubing to make different sounds.

EXHIBIT CONTENT

Features three stations on each side, with signage wall in between. Includes air system, tubing and start buttons.

INTERACTIVES

- Six stations



UP YOUR NOSE: What causes me to sneeze?

EXHIBIT DESCRIPTION

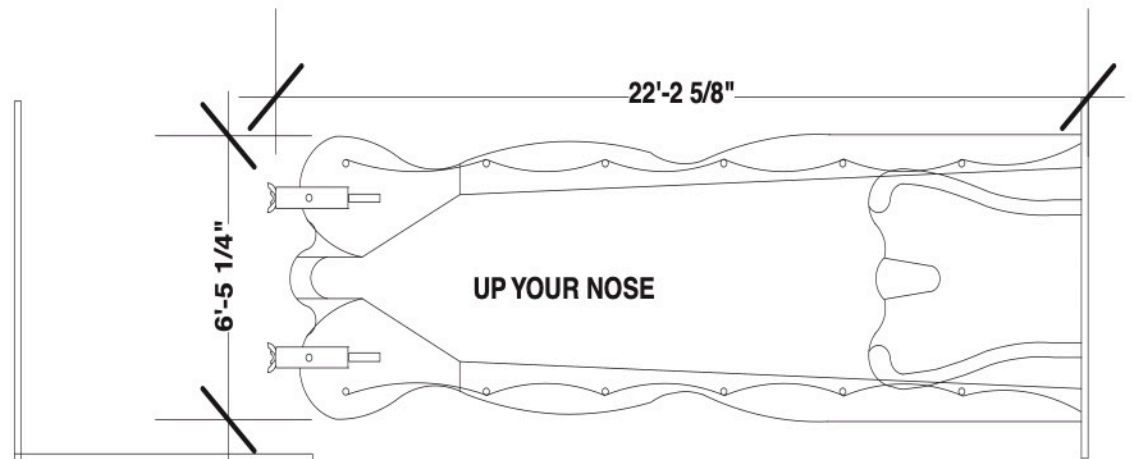
It's what enters your nose that causes you to sneeze! In this exhibit visitors shoot dirt balls into the giant nose. After five dirt balls have gone into the target, the nose lets out a giant sneeze and shoots back a slew of dirt balls!

EXHIBIT CONTENT

Features two dirt ball launchers, 5-foot nose and associated staging. A giant book wall explains what's in dust, has a spinner question, medical terms and more science points.

INTERACTIVES

- Two stations
- Spinner question



SKIN CLIMBING WALL: What causes pimples, warts, moles, etc.?

EXHIBIT DESCRIPTION

Pimples, warts, moles, pores, hair and wounds are only some of the features children can use for hand- and foot-holds on this large (8' H x 12' W) fiberglass replica of human skin.

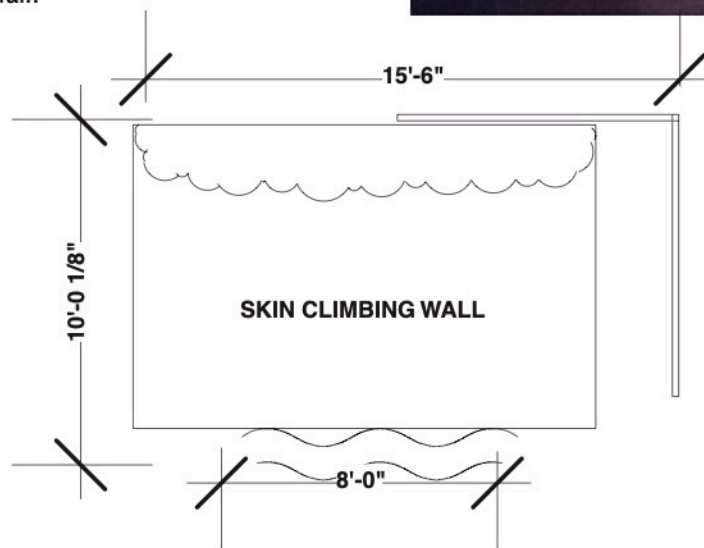
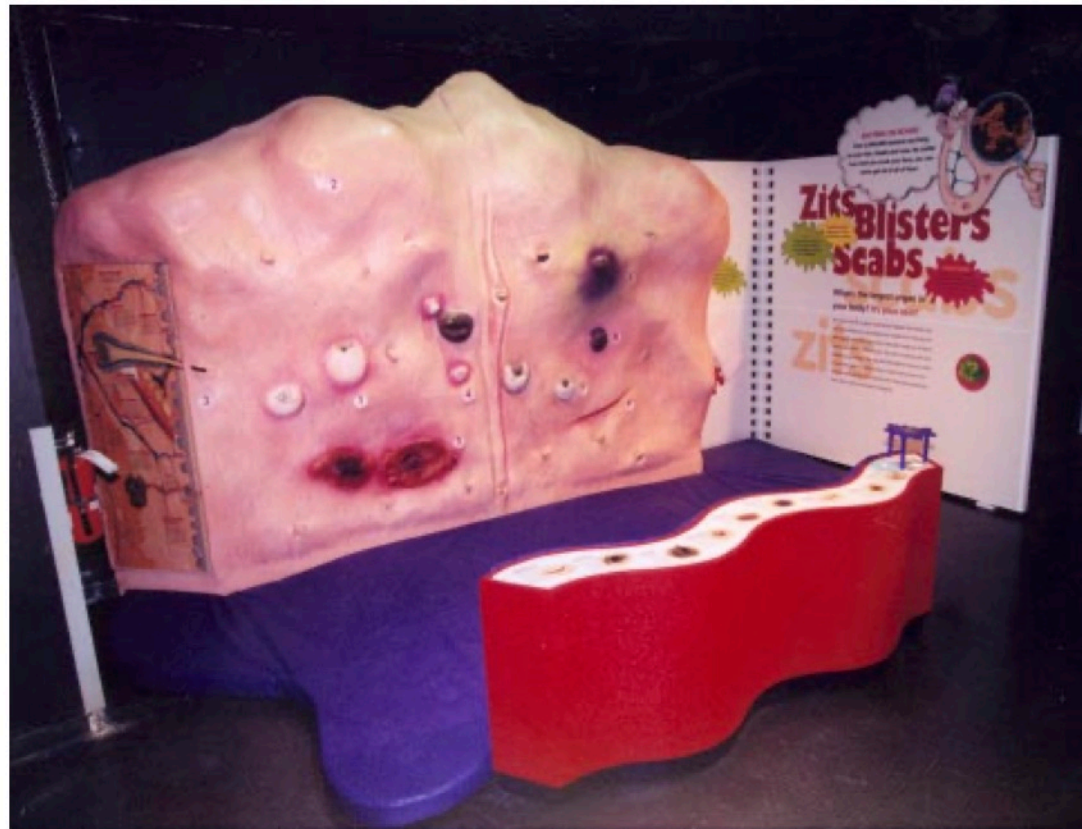
At the left end of the wall visitors can see a cross-section of the skin, showing the dermis, hair follicles, etc. Near the skin a book wall provides more scientific facts about skin. In front of the wall is an information stand explaining the nine features on the wall. A large and deep mat is provided to protect visitors should they fall.

EXHIBIT CONTENT

Includes climbing wall, book wall, information stand, safety mat, magnifying glass, spinner question and science factoids.

INTERACTIVES

- Skin wall (three persons at one time)
- Magnifying glass
- Spinner question
- Spectator viewing: high



VOMIT CENTER: Why do I barf?

EXHIBIT DESCRIPTION

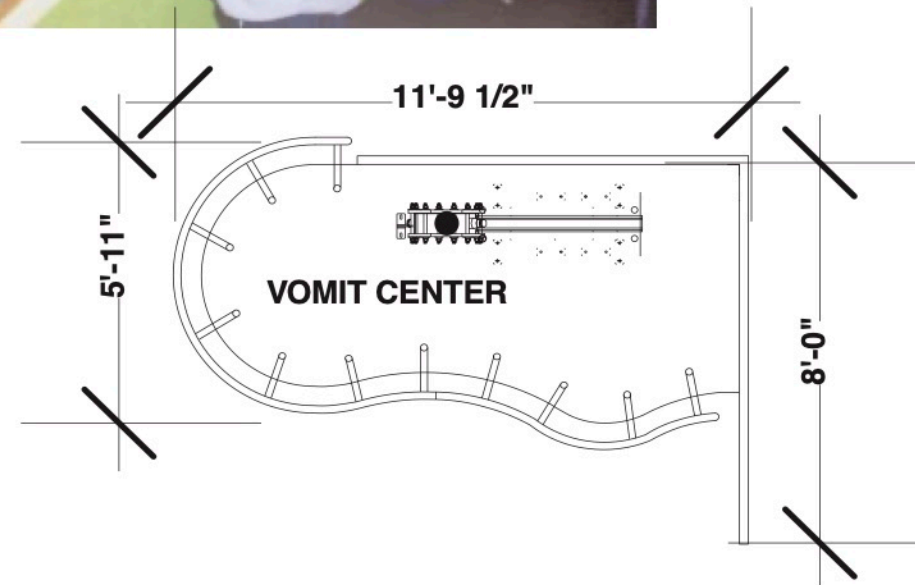
This is an animated presentation by “Her Grossness” explaining that there are many reasons why we vomit. A Rube Goldbergesque structure of a digestive system explains and provides an active demonstration for visitors to participate in learning the communication and physical process that occurs when you vomit.

EXHIBIT CONTENT

Visitors watch “Her Grossness” on a video and then follow her explanation, actively engaging the mechanical digestive system. A book wall provides additional scientific information and medical cutaway of the esophagus.

INTERACTIVES

- Mechanical machine with two activities



PATIENTS PLEASE: Learn your body parts!

EXHIBIT DESCRIPTION

Play surgery. Learn your body parts by trying to pick them out of their location without touching the sides of the compartment or a red light and buzzer will go off. Patients please!

EXHIBIT CONTENT

Includes a playing table, body parts, tweezers and your patient — a cartoon character. Two player stations.

INTERACTIVES

- Two stations

